

MAGNET-MESSSTATIV

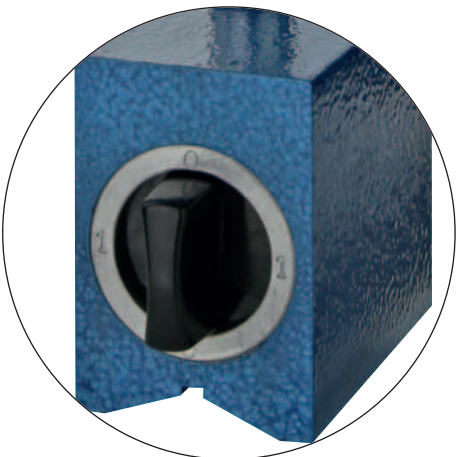
MAGNETIC DIAL SUPPORT



208.106



208.106.4



- mit Feineinstellung
- Messuhr-Aufnahme 8 mm
- Gestänge verchromt
- Magnet mit prismatischer Sohle und Ein/Aus-Schalter

- *with fine adjustment*
- *for dial 8 mm shank*
- *chromed column*
- *prismatic magnetic base, with on/off switch*

Art.-Nr. <i>Item no.</i>	Gesamthöhe <i>Total height mm</i>	Säule <i>Column mm</i>	Querarm <i>Meas. arm mm</i>	Fuß <i>Base (LxBxH) mm</i>	Magnetkraft <i>Magnet force kg</i>
208.106	300	ø 16 x 230, M10	ø 16 x 220	55 x 46 x 70, M10	60
208.106.2	-	ø 16 x 230, M10	ø 16 x 220	-	-
208.106.1	290	ø 16 x 230, M10	ø 16 x 220	70 x 50 x 55, M10	80
208.106.4	500	ø 20 x 420, M12	ø 16 x 390	75 x 60 x 80, M12	80
208.106.5	-	ø 20 x 420, M12	ø 16 x 390	-	-