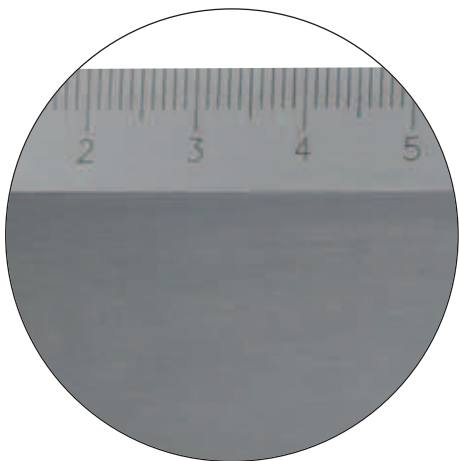
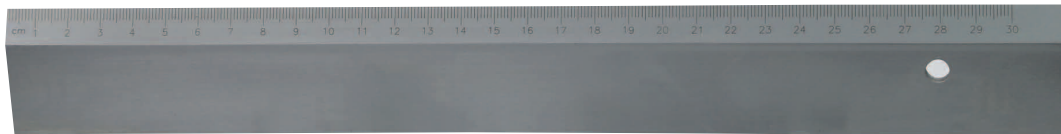


WERKSTATTLINEALE

STEEL RULER



- aus Spezialstahl, geschliffen
- *made of steel, grounded*
- MIT Facette
- MIT mm-Teilung
- *WITH bevelled edge*
- *WITH mm graduation*

Art.-Nr. <i>Item no.</i>	Abmessung <i>Size mm</i>
214.731	300 x 40 x 5
214.732	500 x 40 x 5
214.733	600 x 40 x 5
214.734	800 x 40 x 5
214.735	1000 x 40 x 5
214.736	1500 x 40 x 5
214.737	2000 x 40 x 5