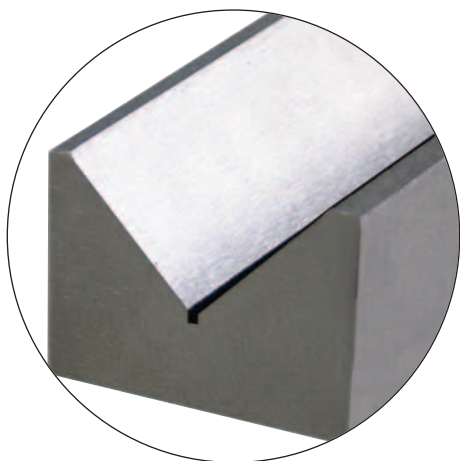
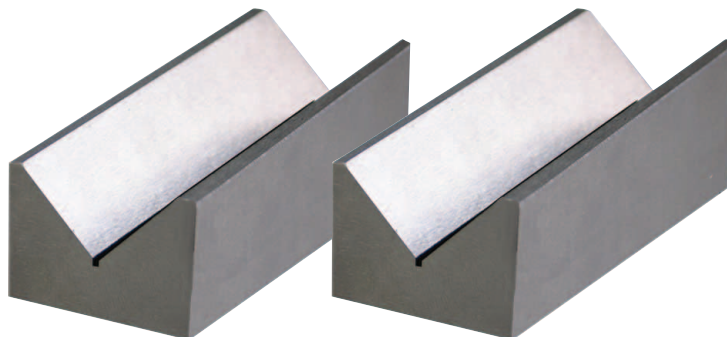


**PRISMEN-PAARE**

*V-BLOCKS*



- Prismen-Paare DIN 876/0 (0,008 mm)
- aus Spezialstahl, gehärtet
- paarweise bearbeitet
- Einschnittwinkel 90°

- *V-blocks DIN 876/0 (0.008 mm)*
- *made of special steel, hardened*
- *pairwise finished*
- *90° groove angle*

Art.-Nr. <i>Item no.</i>	Genauigkeit <i>Accuracy</i>	Abmessung <i>Size (L x W x H) mm</i>	für Welle ø <i>for Shaft mm</i>
<b>318.271</b>	DIN 876/0	75 x 35 x 30	5 - 40
<b>318.272</b>	DIN 876/0	100 x 47 x 40	5 - 55
<b>318.273</b>	DIN 876/0	150 x 55 x 45	5 - 60
<b>318.274</b>	DIN 876/0	200 x 65 x 55	5 - 75

- Prismen-Paare DIN 876/1 (0,016 mm) oder DIN 876/3 (0,064 mm)
- aus Gusseisen mit hoher Verschleißfestigkeit
- paarweise bearbeitet
- Einschnittwinkel 90°

- *V-blocks DIN 876/1 (0.016 mm) or DIN 876/3 (0.064 mm)*
- *made of cast iron with high resistance to wear*
- *pairwise finished*
- *90° groove angle*

Art.-Nr. <i>Item no.</i>	Genauigkeit <i>Accuracy</i>	Abmessung <i>Size (L x W x H) mm</i>	für Welle ø <i>for Shaft mm</i>
<b>318.281</b>	DIN 876/1	75 x 40 x 30	6 - 40
<b>318.282</b>	DIN 876/1	100 x 40 x 30	6 - 40
<b>318.283</b>	DIN 876/1	150 x 50 x 40	8 - 60
<b>318.284</b>	DIN 876/1	200 x 70 x 50	8 - 70
<b>318.291</b>	DIN 876/3	75 x 40 x 30	6 - 40
<b>318.292</b>	DIN 876/3	100 x 40 x 30	6 - 50
<b>318.293</b>	DIN 876/3	150 x 50 x 40	8 - 60
<b>318.294</b>	DIN 876/3	200 x 70 x 50	8 - 70